

The European Commission's science and knowledge service

Joint Research Centre

Stakeholder's involvement in R&D disposal project: the experience of JOPRAD

Alexandra van Kalleveen


International Nuclear Law Association

*Meeting of Working Groups 1, 3 and 5
Karlsruhe, Achat Hotel – 3rd May 2017*



BACKGROUND

Euratom

- Safe management of radioactive waste
- Over 30 years of policies
- radioactive waste management (RWM)
- spent fuel (SF) management

The Joint Research Centre

- European Commission
- Centre of science & technology support for the EU
- Karlsruhe: centre-point for lab work with highly radioactive material including storage and disposal studies



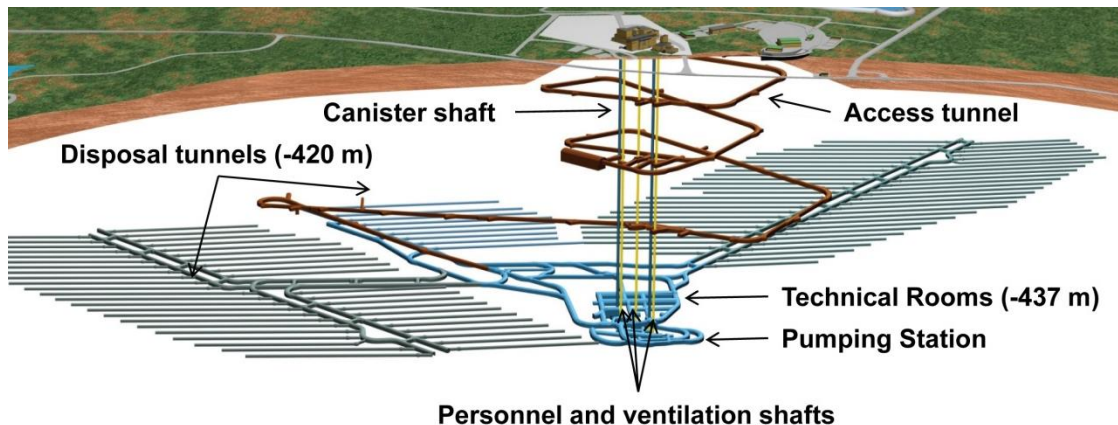
OBJECTIVES

Share insight on Euratom R&D project in RW management

- "Towards Joint Programming on Radioactive Waste Disposal" (JOPRAD) project

Focus on role of civil society

Share Lessons Learned



CONTEXT

Euratom Horizon2020 Research Framework

- Indirect Actions (fusion energy)
- Indirect actions (nuclear fission and radiation protection)
- Direct actions (JRC)
- Budget for 2014-2018



JOPRAD (www.joprad.eu)

- Objectives
- Timeframe
- Partners
- Actors
- Link to Euratom Council Directive 2011/70



MAIN CHALLENGES

Background of civil society members

- Technical or non-technical?
- To which extent can civil society contribute to discussion on R&D topics?



Identify points open to discussion

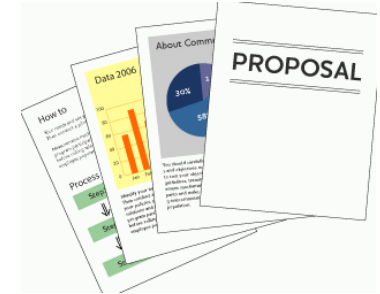
- Are there discussion boundaries?



Foster constructive discussion

- Can the project come to a halt because of opposed viewpoints?

CIVIL SOCIETY PROPOSAL (1)



Civil Society (CS) identified:

- Key research areas to be addressed in joint research programme
- Rules and procedures for its potential involvement in joint programming

Key issues (non-exhaustive):

- Quality of data
- Siting
- Disposal methods
- Evaluation criteria for safety case
- Social science research, interaction with humanities and arts



CIVIL SOCIETY PROPOSAL (2)

Not limit CS participation to non-technical topics

Joint Programming to include:



- Social science (RWM is multidisciplinary)
- "Citizen Science" in order to develop methodology for CS involvement in R&D

Governance scheme addressing expectations of CS

KEY MESSAGES

Collaborative proposal: Necessary to involve Civil Society at project proposal level



Benefit for CS: Active participation in project meetings led CS to clearly identify its role

Benefit for other stakeholders: Added value of CS public report



MAJOR OUTCOMES

CS view represented at early stage in:

- definition of a European R&D strategy for waste disposal
- development of a disposal project (R&D versus implementation e.g. site selection)

CS approach on stakeholder's involvement in R&D is shared

Societal visibility, transparency of R&D is ensured

Trust is built upstream



Stay in touch

Alexandra.van-kalleveen@ec.europa.eu



EU Science Hub:
ec.europa.eu/jrc



Facebook:
EU Science Hub – Joint Research Centre



Twitter:
@EU_ScienceHub



LinkedIn:
Joint Research Centre



YouTube:
EU Science Hub

The Joint Research Centre at a glance

3000 staff

Almost 75% are scientists and researchers.
Headquarters in Brussels and research facilities located in 5 Member States.

